

Link-It™ Manage BOM

Link-It™ Manage BOM is an extension to Manage Properties application. It allows you to manage item and BOM (Bill of Materials) data conveniently through the CAD drawing's bill of materials. Manage BOM checks and corrects data, thereby improving overall data quality. If you wish to automate routine design tasks, Manage BOM can be connected with your company's current data management systems such as ERP, PDM, and PLM.

Main features

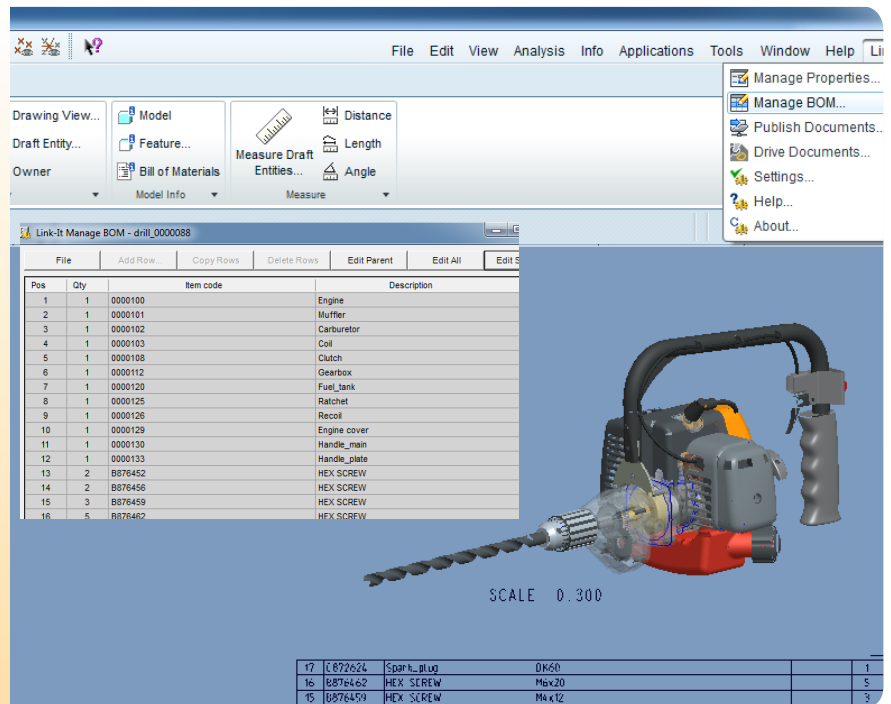
Configurable: Manage BOM is fully adaptable to company-specific rules and processes.

Integrable: Manage BOM can link with business system solutions such as ERP, PDM, and PLM.

Extensive support: Manage BOM is available for most popular CAD systems: Pro/ENGINEER, Creo Elements/Pro, Autodesk Inventor, and AutoCAD.

Benefits

- Speeds up and simplifies designers' work
- Ensures data quality before transfer to business systems
- Improves the traceability of product data between systems
- Automates time-consuming and error-prone routine tasks
- Standardizes and streamlines design processes
- Reduces the need for complicated engineering instructions



Seamless integration with your CAD system

Link-It™ Manage BOM is integrated into the CAD system's user interface. Manage BOM supports your CAD system's native BOM and attribute data management.

In a multi-CAD environment, one generic Manage BOM setup will link with multiple CAD systems, while fully utilizing their existing attributes and drawing BOM tables.

CAD system	Method to manage attribute data	Method to manage part families
Pro/ENGINEER	User Parameter	Family table
Autodesk Inventor	iProperty	iPart, iAssembly
AutoCAD	Block attribute, X-Data	N/A
SolidWorks	Custom Property	Configuration table

Features

Edit attributes

Manage BOM provides direct access to each BOM members attributes through Manage Properties Data form.

BOM Checks

BOM Check. Checks attribute values of BOM members. Check rule can simply check that the attribute exist and the value is not empty, but it is also possible to create advanced rules for more complex criteria.

Pos	Qty	Item code	Description
1	1	0000100	Engine
2	1	0000101	Muffler
3	1	0000102	Carburetor
4	1	0000103	Coil
5	1	0000108	Clutch
6	1	0000112	Gearbox
7	1	0000120	Fuel_tank
8	1	0000125	Ratchet
9	1	0000126	Recoil
10	1	0000129	Engine cover
11	1	0000130	Handle_main
12	1	0000133	Handle_plate
13	2	B876452	HEX SCREW
14	2	B876456	HEX SCREW
15	3	B876459	HEX SCREW

Features

BOM & Parent Check

In addition to BOM, this feature also checks attributes of parent assembly and drawing.

Custom check. You can customize additional BOM Checks to fully include your company-specific rules and processes.

BOM Exports

Data delimited. Export BOM to text file where the data records are separated by a character for instance tab, pipe and/or comma. Data source definitions, data separators as well as file suffixes are configurable. Data source can be CAD document attribute and BOM information like position and quantity.

Data fixed length. Export BOM to text file where the data records contain a fixed number of characters. Lengths of data records as well as file suffixes are configurable. Data source can be CAD document attribute and BOM information like position and quantity.

XML file. Export BOM to XML file. Data source definitions as well as XML tags and structure definitions are configurable. Data source can be CAD document attribute and BOM information like position and quantity.

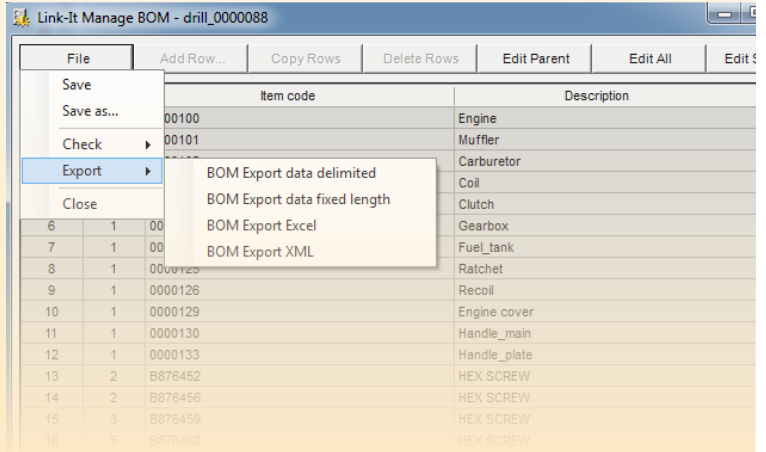
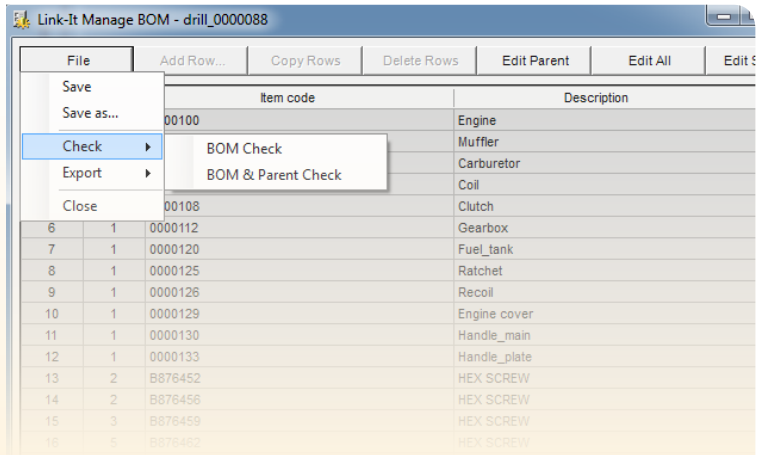
Excel Worksheet. Export BOM to native Excel file. Data source and target cell definitions are configurable. Data source can be CAD document attribute and BOM information like position and quantity.

Custom Export. You can customize additional BOM Exports to fully adapt your company-specific rules and processes. In custom method you can

- improve automation by combining BOM checks and exports together
- embed intelligence using rules
- establish integration to other business systems using custom functions

Rules

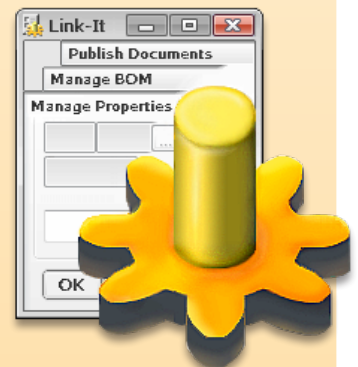
Rule is a powerful and simple way to embed advanced intelligence into BOM Checks and Exports. You can create rules for instance to automate BOM export selection, file naming as well as data source definitions. In such rule you can freely utilize CAD document attributes as well as date, time and user information.



Custom functions

Custom functions can be used to improve the functionality and automation of BOM Exports. A function call can be linked directly to BOM Export.

With custom functions you can establish simple one-directional or advanced bidirectional links with any system that supports SQL, XML, MS Excel or simple text file based data transfer. No special programming skills or tools are required to customize functions, as they use an easy-to-understand script language and can be modified with any common text editor.



Link-It™ Manage BOM software is installed on a server that allows CAD workstations to access the program centrally. Upgraded settings or configurations are immediately available to all users, including other CAD program users.

Link-It™ Manage BOM is available for the following CAD systems: Pro/ENGINEER, Creo Elements/Pro, Autodesk Inventor, and AutoCAD.



s o f t

Technology for higher productivity

MP Soft Oy is a software company that serves the manufacturing industry. We create integrable software solutions for CAD systems that improve the productivity and quality of mechanical design. Our solutions streamline design processes complicated by different information systems and rules. Our customers have pointed out that our Link-It™ solutions have noticeably improved designer productivity and motivation as well as data quality.